

INSECT IDENTIFICATION GUIDE

Insect and Damage

Billbug - *Sphenophorus brunnipennis*



Larvae



Adult



Damage

Mole Cricket - *Gryllotalpa* and *Scapteriscus* spp.



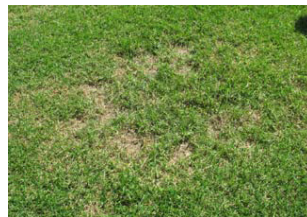
African Black Beetle - *Heteronychus arator*



Larvae



Adult



Damage

Mites - *Oolicotetranychus*, *Eriophyes* spp.



Damage

Argentine Stem Weevil - *Listronotus bonariensis*



Larvae



Adult



Damage

Armyworm - *Spodoptera maurita*



Larvae



Adult

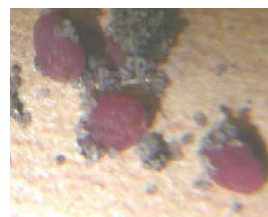
Cutworm - *Agrotis* spp.



Larvae



Damage



Adult

Ground Pearl - *Margarodes* spp.



Damage



INSECT IDENTIFICATION GUIDE



Control Guide

INSECT	MAIN INSECT ACTIVITY PERIOD											
	Jan	Feb	Mar	Apr	May	Jun	Jul	Aug	Sep	Oct	Nov	Dec
African Black Beetle												
Argentinian Scarab												
Argentine Stem Weevil												
Armyworm												
Billbug												
Blackheaded Cockchafer												
Couch Mite												
Cutworm												
Funnel Ant												
Ground Pearl												
Mole Cricket												
Pruinose Scarab												
Sod Webworm												

INSECTICIDE	Mode of Action Group															
		(A) dulticide or (L) arvicide	(C) ontact or (S) ystemic	African Black Beetle	Argentinian Scarab	Argentine Stem Weevil	Armyworm	Billbug	Blackheaded Cockchafer	Couch Mite	Cutworm	Funnel Ant	Ground Pearl	Mole Cricket	Pruinose Scarab	Sod Webworm
Brigade T&O	3A	A	C	X		X	X	X				X				X
Chorpyrifos 500	1B	AL	C	X		X	X		X			X		X		X
Gauntlet	3A	A	C	X		X	X	X			X	X				X
Impede	2A	L	C			X						X		X		
Lepidex	1B	AL	C													
Meridian		L	S	X				X								
Merit	4A	L	S	X	X			X							X	
Pennside	1B	AL	C	X		X								X		
Supracide	1B	AL	C			X				X						



Call 1800 325 397

459 Bells Creek Road, Beerwah, Qld, 4519

Locally Owned and Operated Since 1992

For more handy tips visit www.daleysturf.com.au

or call 5494 0470